



Management Dashboards

If all the energy of individuals in any position is to be spent on acquiring information, perhaps there will be no room left for perceptual analysis and sound decision-making.

In general, the goal of implementing a management dashboard is to improve the decision-making processes, efficiency, flexibility, and coordination of the organization, which ultimately leads to improving the overall performance and achieving the organization's strategic goals.



Gity Group

Gity System Shargh Company (private joint stock) officially started its activities in 2005. Gity's main activities are computer-based in the fields of hardware, software, information technology, and automation, which are presented in the form of various applications such as products, services, and solutions.

Gity System Shargh

Kavan Novin Raya
Arsham

R Studios Remis

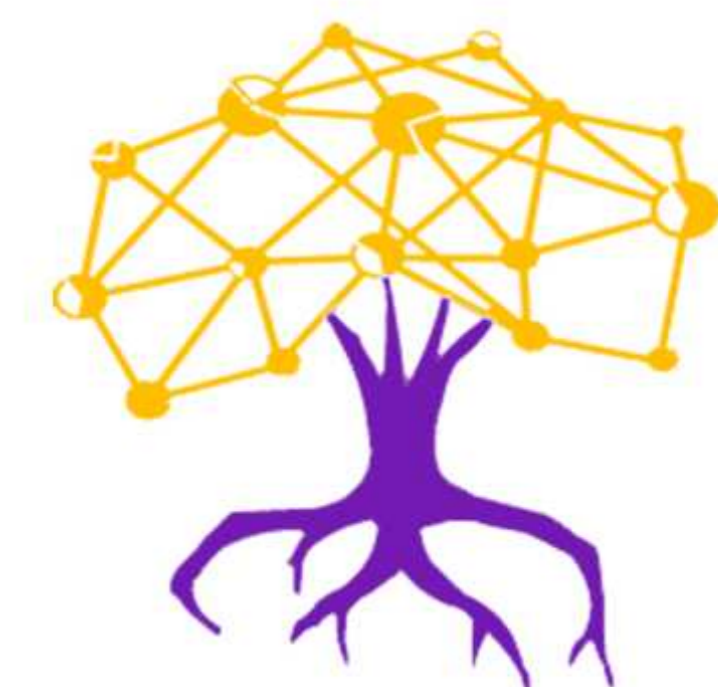
Hamyar
Kianna

Layan Para Pooya
Hasib

Studios TERME



Management Dashboards





Resources Dashboard

The resource provision dashboard has been launched with the aim of facilitating and monitoring the level of achievement of revenue source targets of the municipal organizational areas. In addition to monitoring the operational status of revenue sources, this dashboard also focuses on the separation of public revenues, the allocation of capital assets and the transfer of financial assets, the identification of the capacities of investment and partnership projects, the status of property acquisition in the regions, and the realization of resources obtained from budget considerations.

Co-Worker Dashboard

A periodic performance appraisal is a report that employees receive from the organization. This report includes an assessment of the activities that each employee has performed during a specific period of time. Suggested areas for improvement in performance are also part of this report. The employer can provide feedback on the employee's strengths and outline a path for improvement in areas that the employee needs to work on.



Performance Evaluation Dashboard

In this dashboard, various information of each organizational unit is presented in the form of a management summary, which provides the possibility of integrated monitoring of that area. Based on this, managers can observe the progress of each organization's status, critical and desired indicators, the status of key variables, the progress of projects and other information in comparison with previous years.