

Management Dashboards

Hooshyar
Gity Group



Table of Contents

About Gity Group	3
Introducing Management Dashboards	4
Performance Assessment Dashboard	5
My Co-worker Dashboard	7
Resources Dashboard	9
Contracts Dashboard	11



About

Gity Group

Ancient History

Gity System Shargh Company (private joint stock company) officially started its activities in 2005. Gity's main activities are computer-based in the fields of hardware, software, information technology, and automation, which are presented in the form of various applications such as products, services, and solutions.

Experience, Knowledge, Opportunity

With business intelligence, no opportunity or threat will remain hidden. Business intelligence is the art of collecting your business information and transforming it into clear knowledge for timely and correct decision-making. Transparency and close monitoring are what you can rely on for growth and development, and making your organization intelligent is the first and most important step.

Gity System
Shargh

Kavan Novin Raya
Arsham

R Studios
Rtemis

Hamyar
Kiana

Hasib Beyan
Fars Pooya

T Studios
TERME



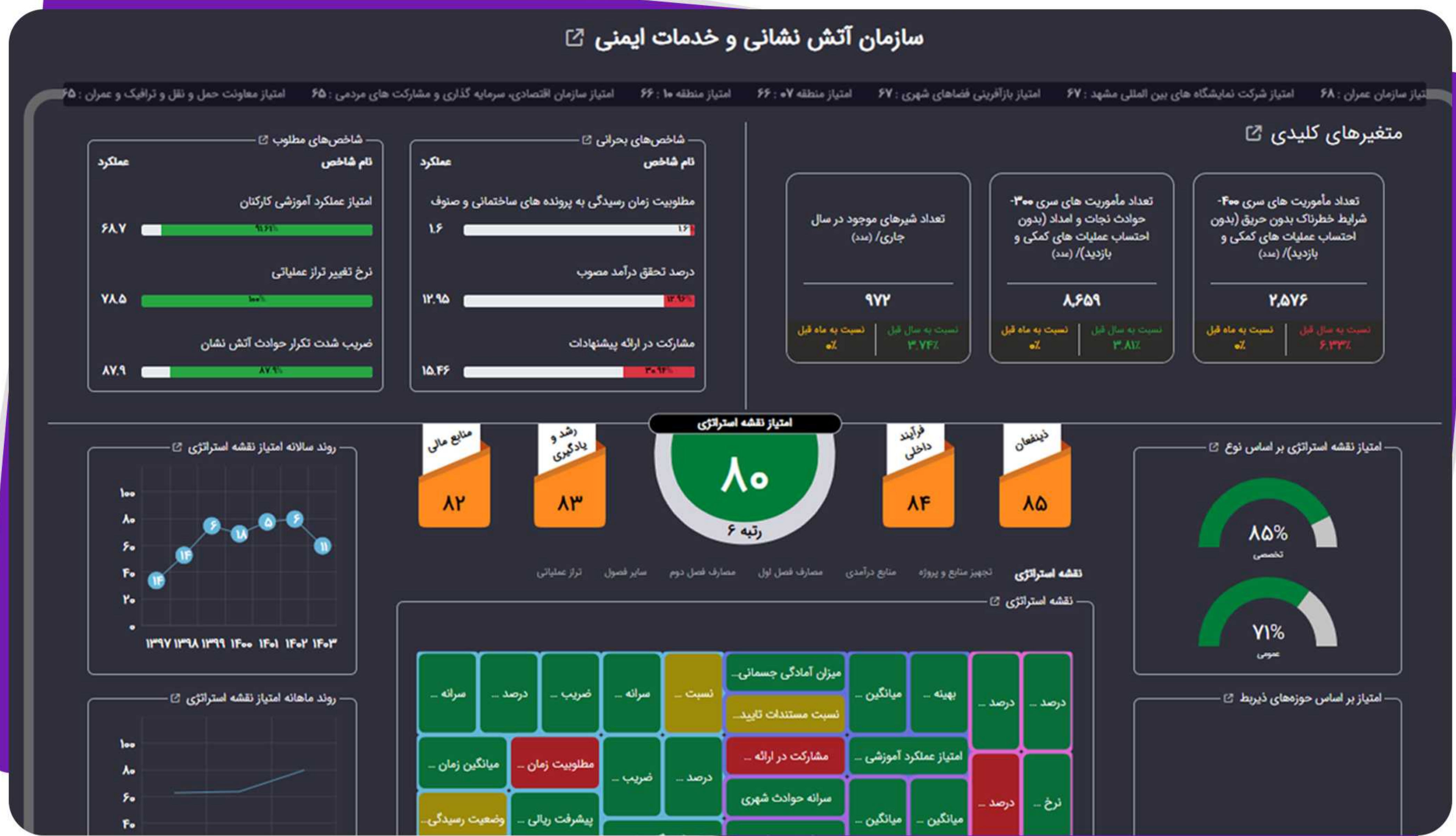
Introducing

Management Dashboards

If all the energy of people in any position is to be spent on acquiring information, perhaps there will be no room left for perceptual analysis and sound decision-making. When you spend more time and energy than necessary in your small or large organization to put together information obtained from different departments, you reduce the energy and time needed to grow your organization.



In general, the goal of implementing a management dashboard is to improve the organization's decision-making processes, efficiency, flexibility, and coordination, which ultimately leads to improving overall performance and achieving the organization's strategic goals.



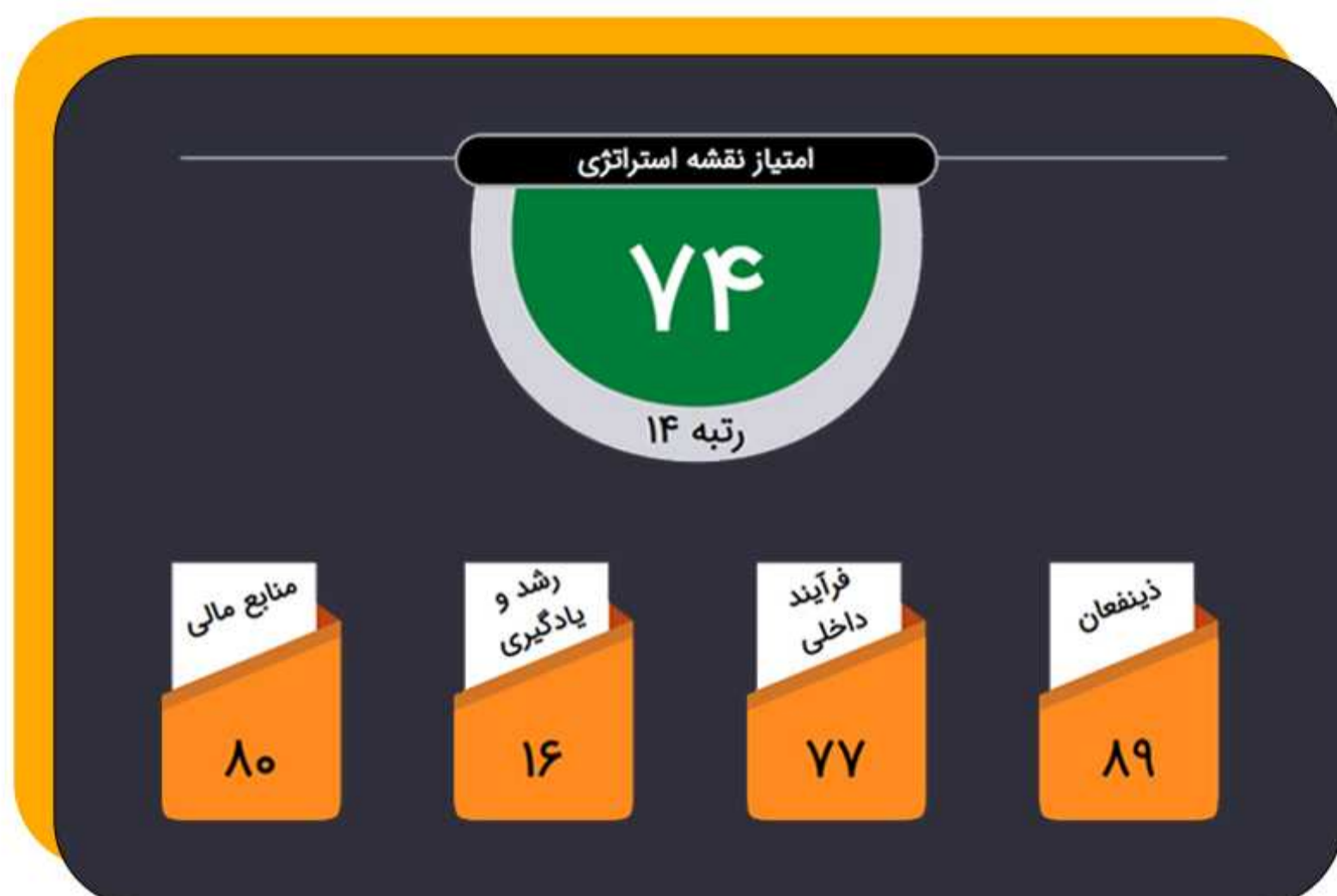
Introducing

Performance Assessment Dashboard

Analyzing and evaluating performance can be done using appropriate tools and through comprehensive measurement of an organization's indicators. This is done through an organizational performance assessment dashboard. This dashboard, with the ability to display and analyze a wide range of indicators and key variables, allows for intelligent grouping.

Various information for each organizational unit is presented in the form of a management summary, which allows for integrated monitoring of that area. Based on this, managers can monitor the status of each organization, key performance indicators, critical and desired indicators, the status of key variables, project progress, and other information in comparison with previous years.

Performance Assessment Dashboard



BSC Score

Calculation and display of organization score, rank and status of the BSC model

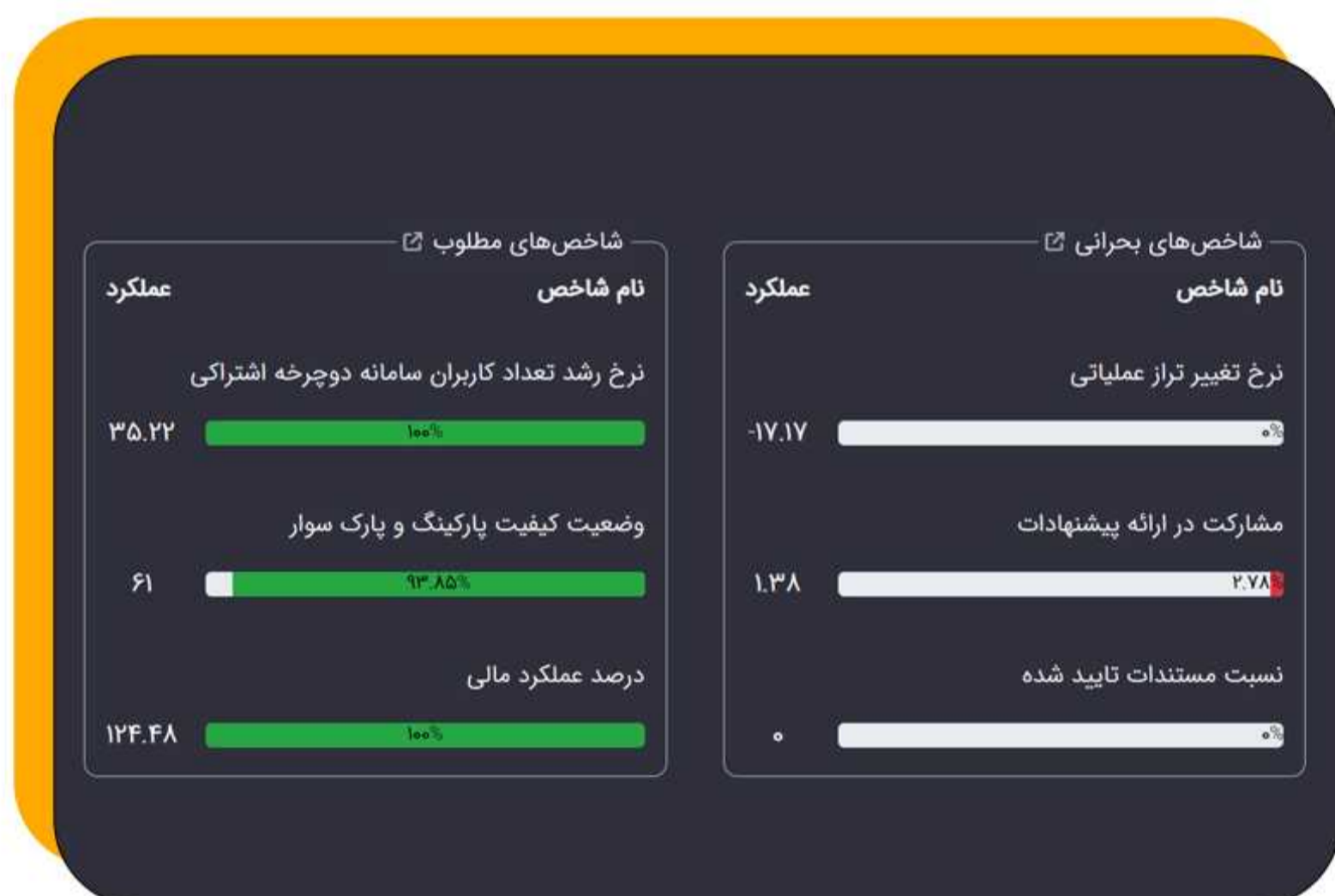
Key Variables

Display of values and percentage changes of key variables and data



KPI Score

Display of critical indicators with a score below 40 and desirable indicators with a score above 70



BSC Model Score Change Trend

Comparison of the trend of change in the organization's strategic plan score over the past years and months





Introducing

Co-Worker Dashboards

A periodic performance appraisal is a report that employees receive from their organization. This report includes an assessment of the activities that each employee has performed during a specific period of time. Suggested areas for improvement in performance are also part of this report. The employer can provide feedback on the employee's strengths and outline a path for improvement in areas that employees need to work on.

Co-Worker is a tool for evaluating your performance at work. Managers often consider a self-assessment as part of a performance appraisal. In a personal performance appraisal, you have the opportunity to reflect on your strengths and weaknesses, discuss your recent achievements, identify areas for improvement, and set goals for yourself.

Co-Worker Dashboards



Amounts Received

Calculation and display of the amount received by an individual, broken down into salary, overtime, bonuses, and benefits.

Evaluation Score

Display of periodic welfare evaluation score, productivity and annual human resources evaluation



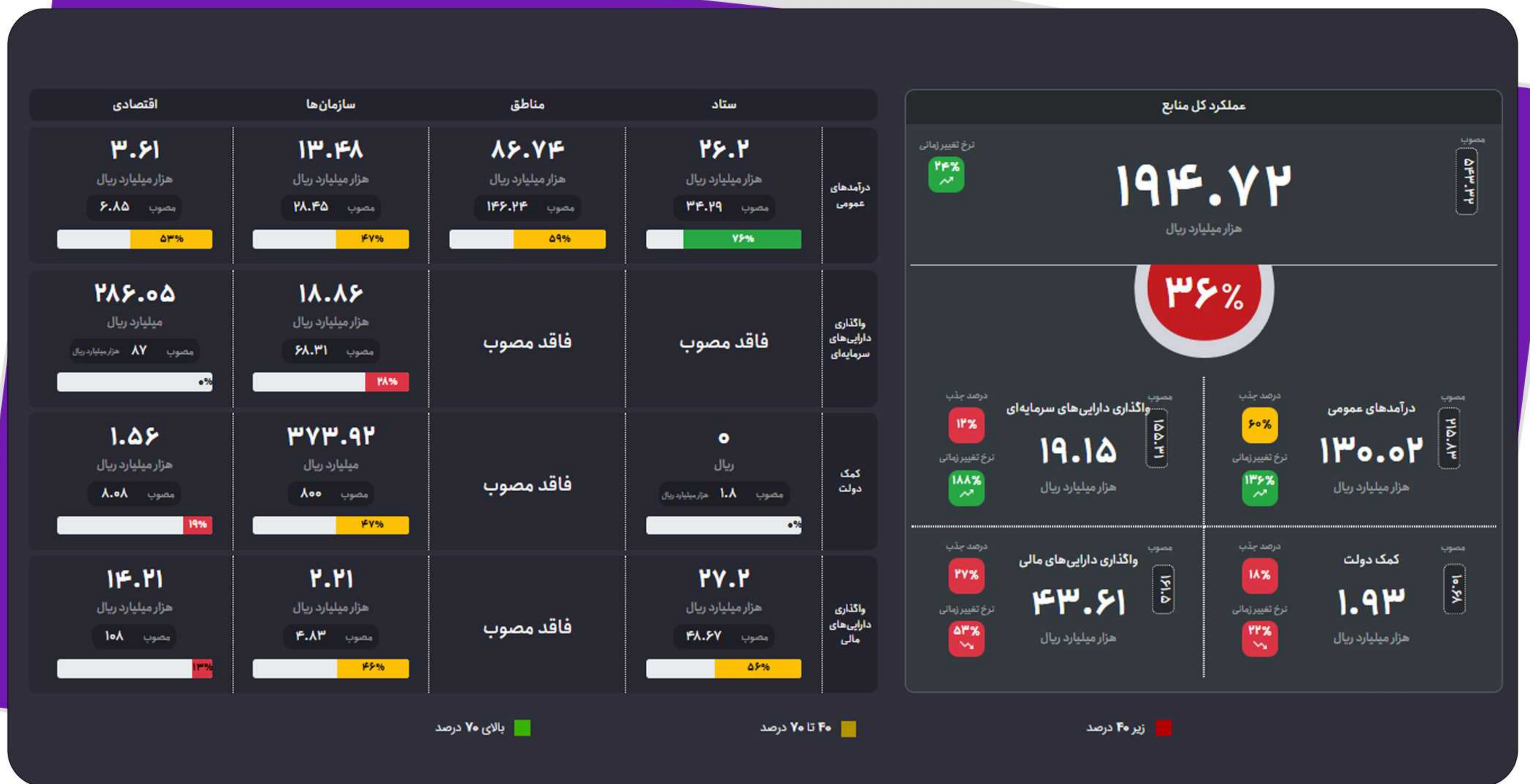
Educational System

Display the number of registered and accepted training hours by type of training

Attendance & Absence

Display various reports of delays, rushes, overtime, night work and leave





Introduction

Resources Dashboard

Creating interaction between equipment and optimal allocation of financial resources is one of the determining factors for continuous and sustainable economic growth. In this regard, analyzing and evaluating the level of realization of income sources in planning the future activities of an organization is a very vital matter, and without such programs, the continued activity of an organization will not be possible.

The resource provision dashboard has been launched with the aim of facilitating and monitoring the level of achievement of revenue source targets of the municipal organizational areas. In addition to monitoring the operational status of revenue sources, this dashboard also focuses on the separation of public revenues, the allocation of capital assets and the transfer of financial assets, the identification of the capacities of investment and partnership projects, the status of property acquisition in the regions, and the realization of resources obtained from budget considerations.

Resources Dashboard



Performance Of Revenue Resources

Display of revenue sources by university, region, and organization in different sectors

The Income Of The Regions

Display of the general revenue of different urban areas along with the approved budget

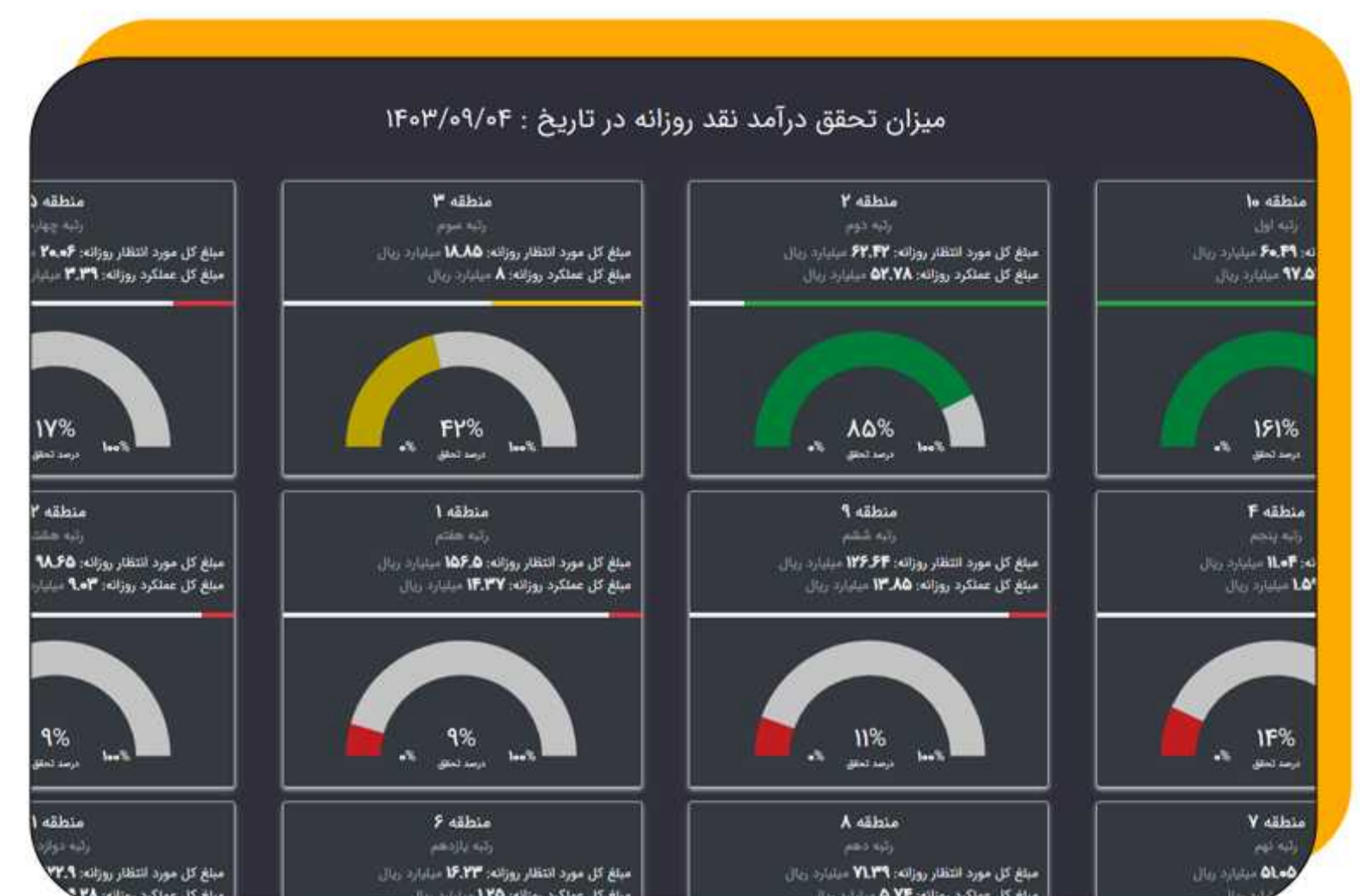


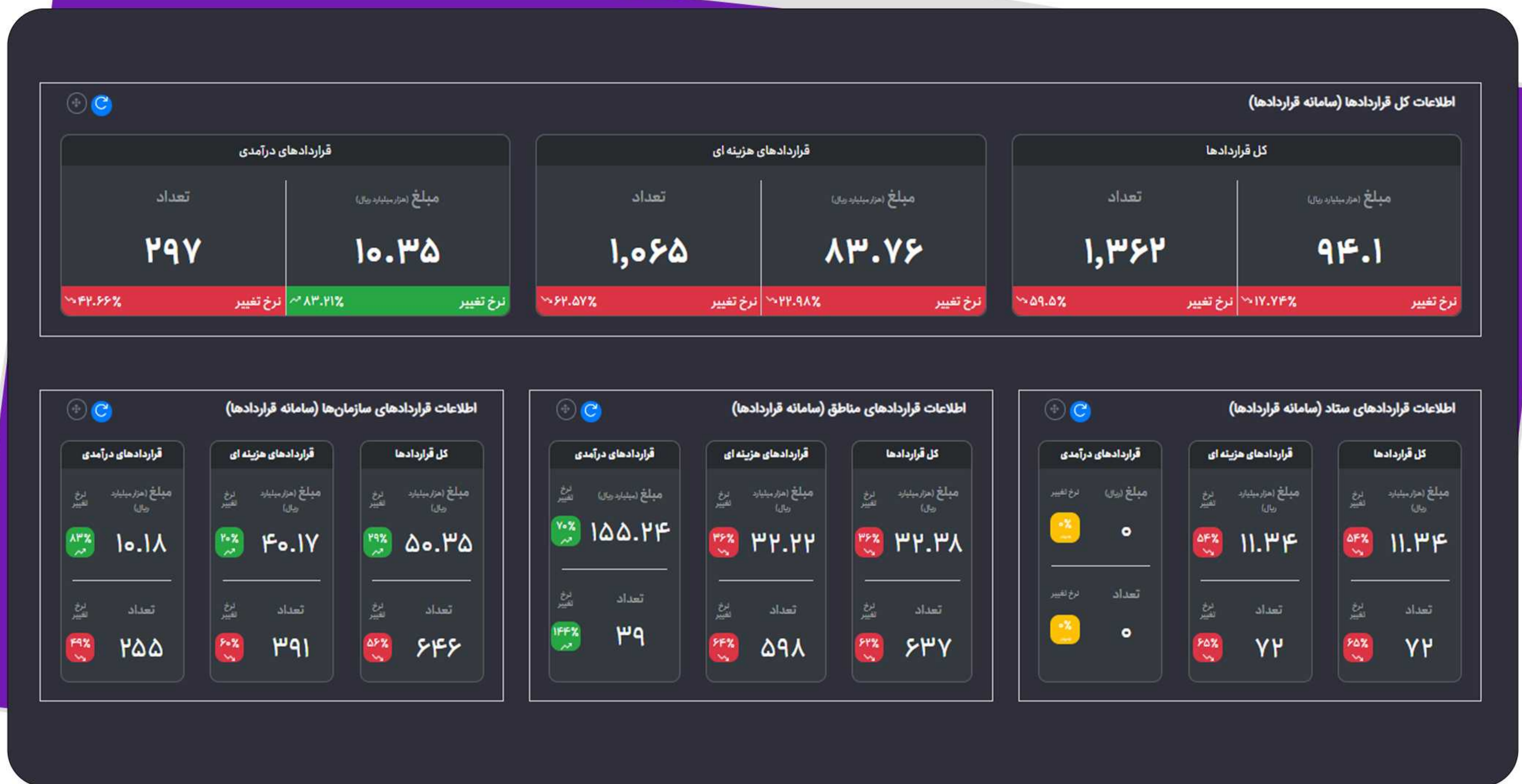
Geographical Display Of Revenues

Spatial display of the revenue realization rate of regions along with the ranking of regions

Daily Income Amount

Display of daily income achievement rates of regions along with ranking





Introduction

Contracts Dashboard

Proper planning for contract management is only part of a planned monitoring approach. Contract management is a complex monitoring process that requires a tool to identify and control different types of contracts in different areas. In order to achieve this tool and also to make the contracts awarded transparent, the Contracts Dashboard has been developed and launched.

The contracts dashboard is designed to visualize data in a targeted manner, helping to reduce risk, protect the organization's interests, aid in making sound decisions, reduce costs, and save time.

Contracts Dashboard



Total Contract Information

Display of the number and total amount of contracts, including income and expenses, by area.

Amount & ROT Of Contracts

Display of the ROT in the amount of contracts, including revenue and expense contracts



Contracts Based On License

Display of the amount, number and ROT of contracts, broken down by type of license and share of each area.



Major Contracts

Display of ten major contracts with revenue and expenses along with their progress rate





Gity Group

☎ 051-36206500

🌐 www.gityco.ir